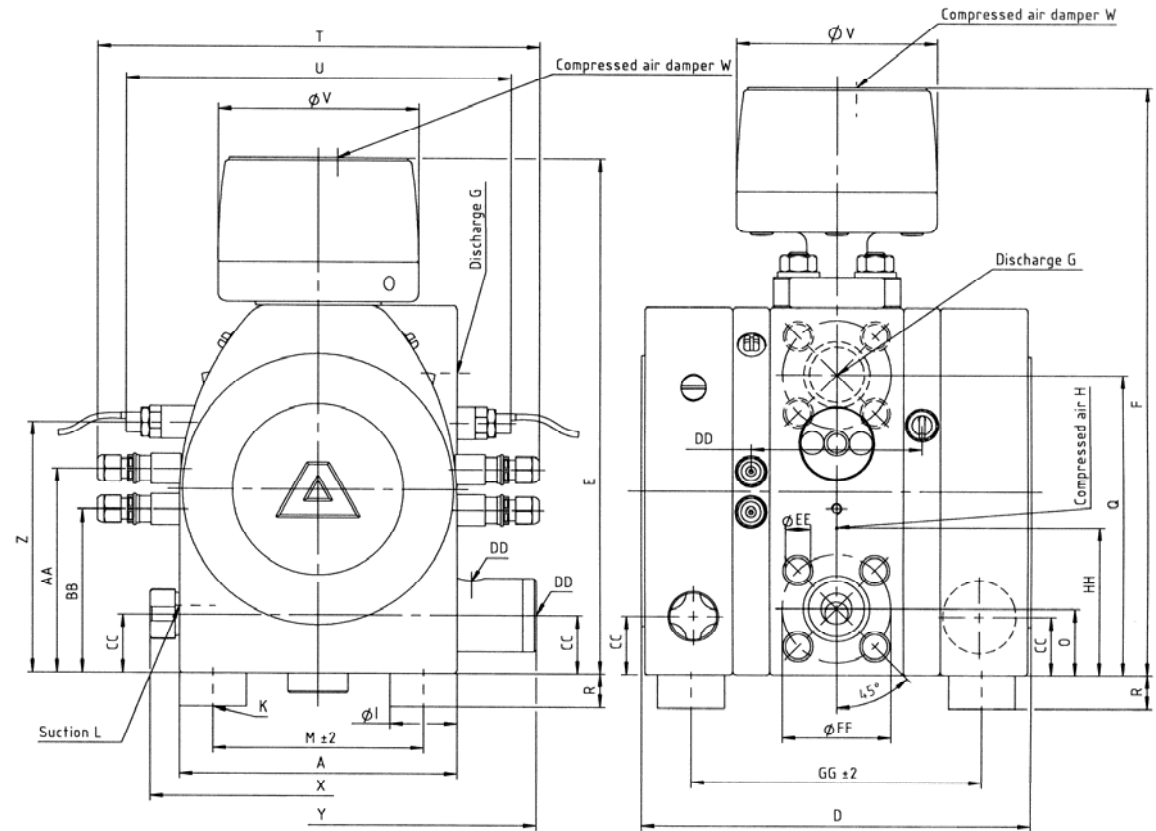
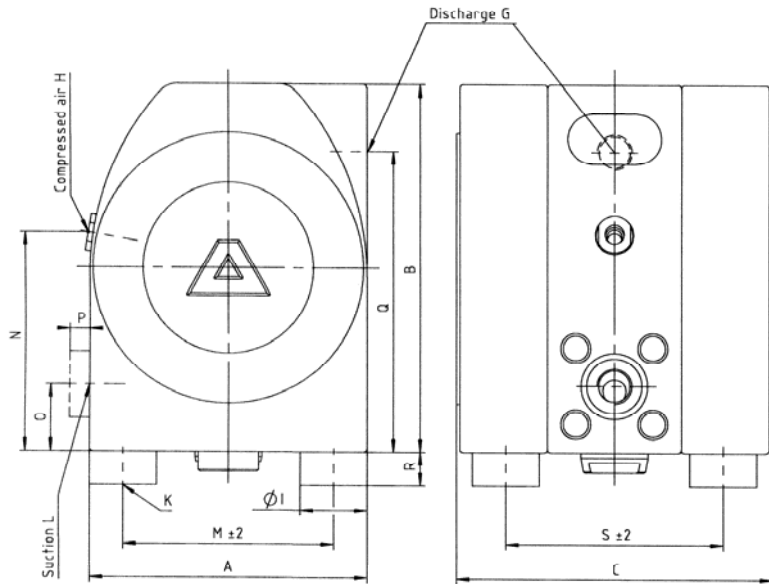


## Dimensions E-Series with options

### Dimensions E-Series Standard



mm	A	B	C	D	E	F	G	H	I	K	L	M	N	O	P	Q	R	S	T	U	V	W	X	Y	Z	AA	BB	CC	DD	EE	FF	GG	HH	
<b>E 08</b>	90	116	128	-	195	-	1/4"	1/8"	25	M6	1/4"	50	58	15	10	101	13	84	-	-	85	1/8"	-	-	-	-	-	-	-	-	-	-	-	58
<b>E 10</b>	110	156	147	189	235	-	3/8"	1/8"	25	M6	3/8"	85	78	17	11	139	13	97	208	202	85	1/8"	-	-	96	90	66	-	75	-	-	139	78	
<b>E 15</b>	166	220	189	233	309	352	1/2"	1/4"	40	M8	1/2"	126	131	40	12	180	20	130	264	230	120	1/8"	201	262	150	122	98	35	102	M12	65	174	89	
<b>E 25</b>	220	300	255	301	433	476	1"	1/4"	40	M8	1"	180	178	48	18	252	20	185	318	272	170	1/8"	252	316	205	163	137	49	118	M12	85	231	122	
<b>E 40</b>	280	412	353	401	574	627	1-1/2"	1/2"	50	M10	1-1/2"	230	206	65	18	347	20	270	378	310	220	1/4"	316	374	296	219	193	72	154	M16	110	318	206	
<b>E 50</b>	360	532	430	482	754	812	2"	1/2"	50	M10	2"	310	266	80	18	452	20	340	458	374	285	1/4"	392	454	391	279	253	82	186	M16	125	392	266	

G = NPT, H + W = BSP

inch	A	B	C	D	E	F	G	H	I	K	L	M	N	O	P	Q	R	S	T	U	V	W	X	Y	Z	AA	BB	CC	DD	EE	FF	GG	HH	
<b>E 08</b>	3.5	4.6	5.0	-	7.7	-	1/4"	1/8"	1.0	M6	1/4"	2.0	2.3	0.6	0.4	4.0	0.5	3.3	-	-	3.3	1/8"	-	-	-	-	-	-	-	-	-	-	-	2.3
<b>E 10</b>	4.3	6.1	5.8	7.4	9.3	-	3/8"	1/8"	1.0	M6	3/8"	3.3	3.1	0.7	0.4	5.5	0.5	3.8	8.2	8.0	3.3	1/8"	-	-	3.8	3.5	2.6	-	3.0	-	-	5.5	3.1	
<b>E 15</b>	6.5	8.7	7.4	9.2	12.2	13.9	1/2"	1/4"	1.6	M8	1/2"	5.0	5.2	1.6	0.5	7.1	0.8	5.1	10.4	9.1	4.7	1/8"	7.9	10.3	5.9	4.8	3.9	1.4	4.0	M12	2.6	6.9	3.5	
<b>E 25</b>	8.7	11.8	10.0	11.9	17.0	18.7	1"	1/4"	1.6	M8	1"	7.1	7.0	1.9	0.7	9.9	0.8	7.3	12.5	10.7	6.7	1/8"	9.9	12.4	8.1	6.4	5.4	1.9	4.6	M12	3.3	9.1	4.8	
<b>E 40</b>	11.0	16.2	13.9	15.8	22.6	24.7	1-1/2"	1/2"	2.0	M10	1-1/2"	9.1	8.1	2.6	0.7	13.7	0.8	10.6	14.9	12.2	8.7	1/4"	12.4	14.7	11.7	8.6	7.6	2.8	6.1	M16	4.3	12.5	8.1	
<b>E 50</b>	14.2	20.9	16.9	19.0	29.7	32.0	2"	1/2"	2.0	M10	2"	12.2	10.5	3.1	0.7	17.8	0.8	13.4	18.0	14.7	11.2	1/4"	15.4	17.9	15.4	11.0	10.0	3.2	7.3	M16	4.9	15.4	10.5	